



Woodland Park Field Office | 719-687-2951 | 113 S. Boundary St. | Woodland Park, CO 80863

Tall Pines HOA

October 30, 2020

On October 21, the Colorado State Forest Service conducted a fall assessment of Tall Pines HOA. We inspected all 52 lots with the purpose of identifying any insect and/or disease issues that need to be addressed.

Findings

During our inspection, we identified one tree with active mountain pine beetle (MPB), Ips, and Zimmerman pine moth infestation. We also identified four trees with red turpentine beetle and one with pitch mass borer. The trees affected by red turpentine beetle and pitch mass borer were not flagged for removal since these do not cause widespread damage like Ips or MPB, but the stress from these attacks can predispose them to Ips or MPB damage so they should be monitored. Locations of infested trees can be seen on the attached aerial photo as well as in the table below:

Point on Map	Address	Lot Number	Latitude	Longitude	Description of Findings
1	717 Piney Ridge	5	39.1001	-104.8160	Red turpentine beetle infested tree near wood pile
2	790 Piney Ridge	28	39.1035	-104.8140	2 trees with red turpentine beetle near wood pile
3	771 Piney Ridge	36	39.1027	-104.8120	Tree with red turpentine beetle and vole damage
4	18535 Lake	52	39.1005	-104.8090	MPB, Ips, and Zimmerman pine moth
5	18650 Lake	39	39.1029	-104.8110	Pitch mass borer

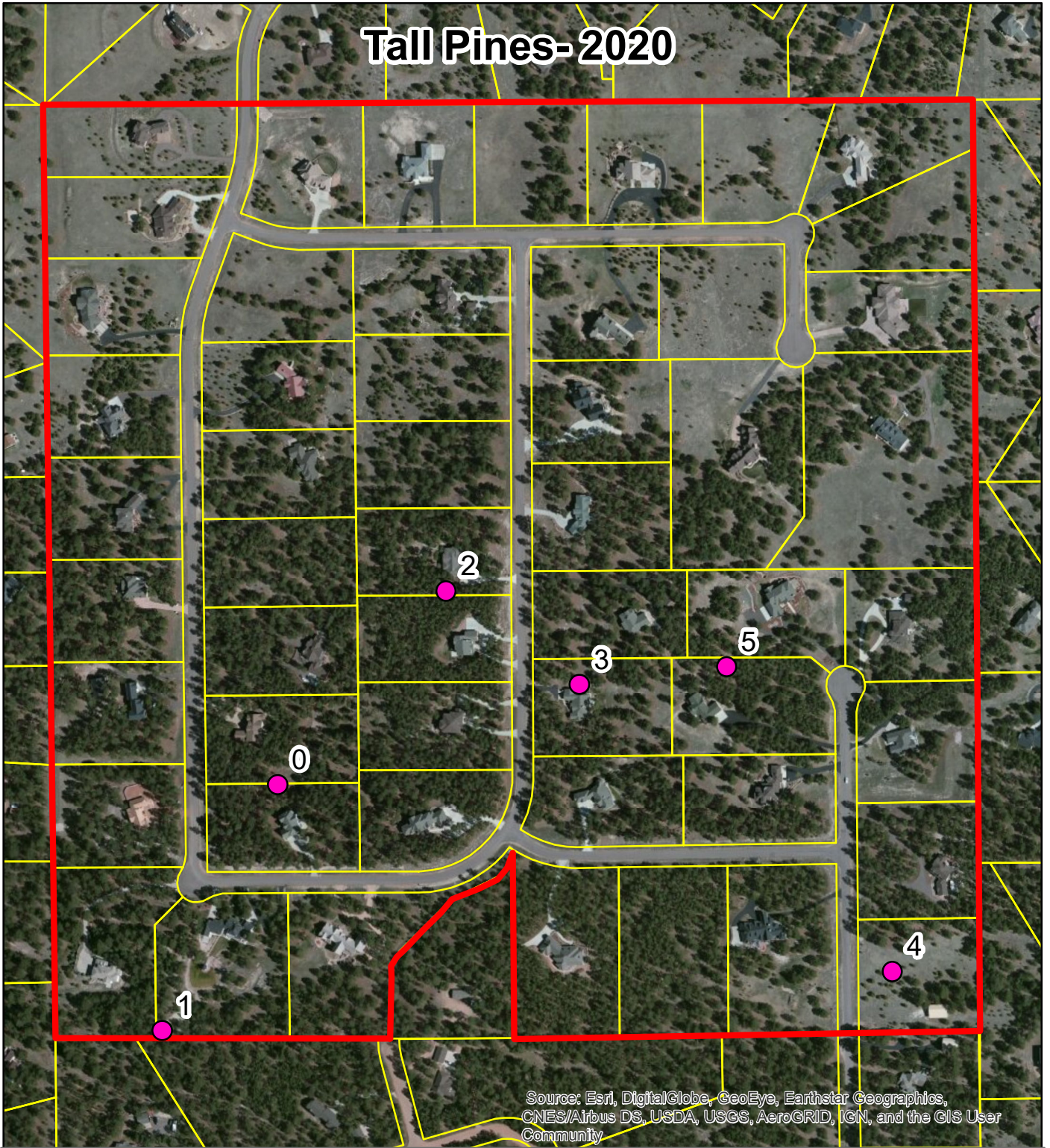
The MPB and Ips beetle infested tree is marked with orange "KILLER TREE" flagging.

GPS are recorded in Decimal Degrees

Overall tree health in Tall Pines is very good. We did not find significant damage over our 2019 inspection, even though 2020 was a drought year and trees were stressed for much of the growing season. The neighborhood chipping program allows landowners to improve tree vigor and dispose of slash piles, so it likely plays a considerable role in the neighborhood's overall forest health.

It is important that homeowners know not to stack any cut, green material next to or in between live trees, this is a sure way to attract MPB.

Tall Pines-2020






Source: Esri, DigitalGlobe, GeoEye, Earthstar Geographics, CNES/Airbus DS, USDA, USGS, AeroGRID, IGN, and the GIS User Community

N



Legend

-  Tall Pines All Points 2020
-  HOA Boundary
-  El Paso County Parcels

0.1 0.05 0 0.1 Miles



Prepared By:
Colorado State Forest Service
Woodland Park Field Office
October 21, 2020