



Woodland Park District | 719-687-2951 | 113 So. Boundary St. | Woodland Park CO 80863

**Tall Pines HOA**

October 2, 2019

On October 1, we the Colorado State Forest Service conducted a fall assessment of Tall Pines development. We inspected all 52 lots with the purpose of identify any insect and/or disease issues that need to be addressed.

**Findings**

During our inspection we did not identified any MPB or ips beetle trees. We did however, find 5 dead or dying trees due to proximity to a leach field or exposure to a herbicide. Trees will die but do not pose a threat of infecting other trees. Locations of infested tree can be seen on the attached aerial photo as well as in the table below.

These trees can be removed or left alone, they currently do not have any insect activity.

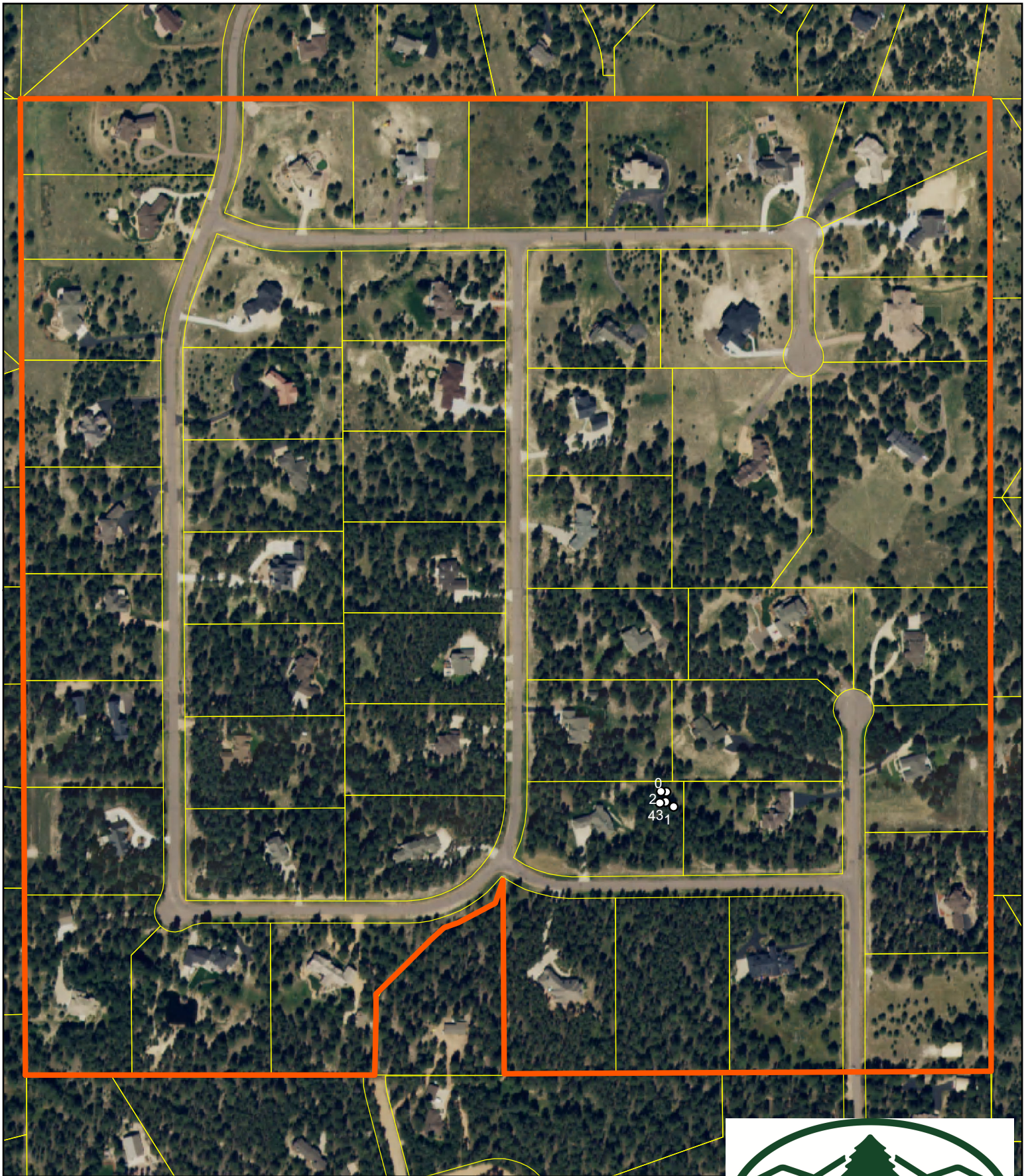
<u>Tall Pines HOA Fall 2019 Inspection</u>				
<b>Points on Map</b>	<b>Address</b>	<b>LAT</b>	<b>LONG</b>	<b>Description of Findings</b>
0-4	754 Tall Timber Ln	39.102111	-104.811375	5 trees, NE corner of lot, trees were not marked

\*GPS are recorded in Decimal Degrees\*

The fall needle cast for most pines in the development has begun and can be seen on the inner part of the tree branches, this is a normal function of a tree this time of year. Over all the tree in the development look good, please continue to prune and remove trees for fire mitigation.



**\*It is important that homeowners know not to stack any cut material next to or in between live trees, this is a sure way to attract MPB.\***

# 2019 Tall Pines Inspection Results Map



Prepared By:  
Colorado State Forest Service  
Woodland Park Field Office  
October 7, 2019

## Legend

-  2019 Points
-  Tall Pine Boundary

